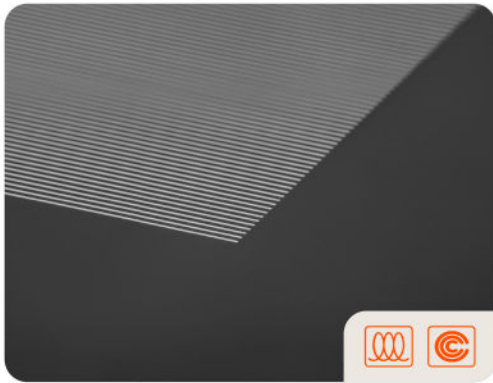


KeraSlate®



Distinguish a product offering at first glance.



Expand your portfolio with this unique gray in the bulk glass-ceramic cooktop.



Compliment **stainless steel, black stainless** or **gray toned appliances**.

The in the bulk slate gray glass-ceramic cooking surface.

Standards

KeraSlate® meets the mechanical specifications defined by European and US standards EN 60335-1, EN 60335-2-6 and UL858.



GLASS-CERAMIC PROPERTIES	UNITS	VALUE
Mechanical		
Density	g/cm ³	2.52
Young's Modulus E	GPa	85
Torsion Modulus G	GPa	34
Poisson's Ratio		0.26
Knop Hardness		545
Minimum mechanical bending strength	MPa	120
Minimum static load resistance (600 x 500mm - Thickness 4mm)	kg	100
Impact resistance: Norwegian Hammer EN60335-1 Pot drop EN60335-2-6 Ball drop UL 858		Pass
Thermal		
CTE (20-700°C)	10 ⁻⁷ .K ⁻¹	12 ± 1.5
Specific Heat (20-100°C)	J/g.K	0.8
Resistance to Thermal gradients	°C	ΔTmax = 460
Resistance to Thermal shock	°C	ΔTmax = 500
Electrical		
Electrical resistivity log n at 250°C	Ω.cm	7.3
Electrical resistivity log n at 350°C	Ω.cm	5.8
Dielectric constant (1MHz, 25°C)		6.7
Loss tangent factor (1MHz, 25°C)		0.004
Chemical		
Hydrolitic resistance DIN 12111		HGB1
Acid resistance DIN 12116		Class 3
Alkali resistance DIN 52322		A2
Sustainability		
Recyclable	Arsenic-free process	Water-washable enamels*

*Washable with water during the finishing process.
All data are based on typical values and are not intended as specifications.

eurokera

NOTE: Technical specifications are available upon request.

www.eurokera.com